

As a global enterprise, HSG sticks to providing professional and convenient service support to customers at home and board



Professional Training

Multiple technical training services and free operation training are provided for customers and dealers in a timely manner.



Efficient Support

Humanistic service model, online services and 7*24 hotline to offer solutions and assistance.



Optimized Transport

Multi-channel transport solutions and a professional transport solution team providing various transport cases to satisfy the demand of customers and save transportation fees.



Sufficient Accessories

Highly efficient accessory delivery service; multiple network inventories jointly respond to accessory demand, shortening customers' waiting times and accelerating production.



Careful Services

Domestic door-to-door service and free proofing, with over 100+ dealers providing efficient and convenient services.



Shape Metal, Shape Trust



Website



Facebook



Youtube

Headquarters Add.: No. 4, Anye Road, Shunde District, Foshan, Guangdong, China
Website: www.hsglaser.com
Email: info@hsglaser.com
Tel: +86 757-66833906



TL730S

Flagship '4+1' Full-track Heavy Duty Tube Beveling Fiber Laser Cutting Machine

www.hsglaser.com

Company Culture



SLOGAN

Shape Metal, Shape Trust



MISSION

To support the high-speed growth of our customers



VISION

To be a world-leading provider of metal shaping equipments & comprehensive solutions

Company Profile



19

Global Branches



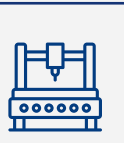
100+

Countries Covered



5

Manufacturing Bases



8,000+

Annual Capability



30+

Global Service Centers



135,000m²

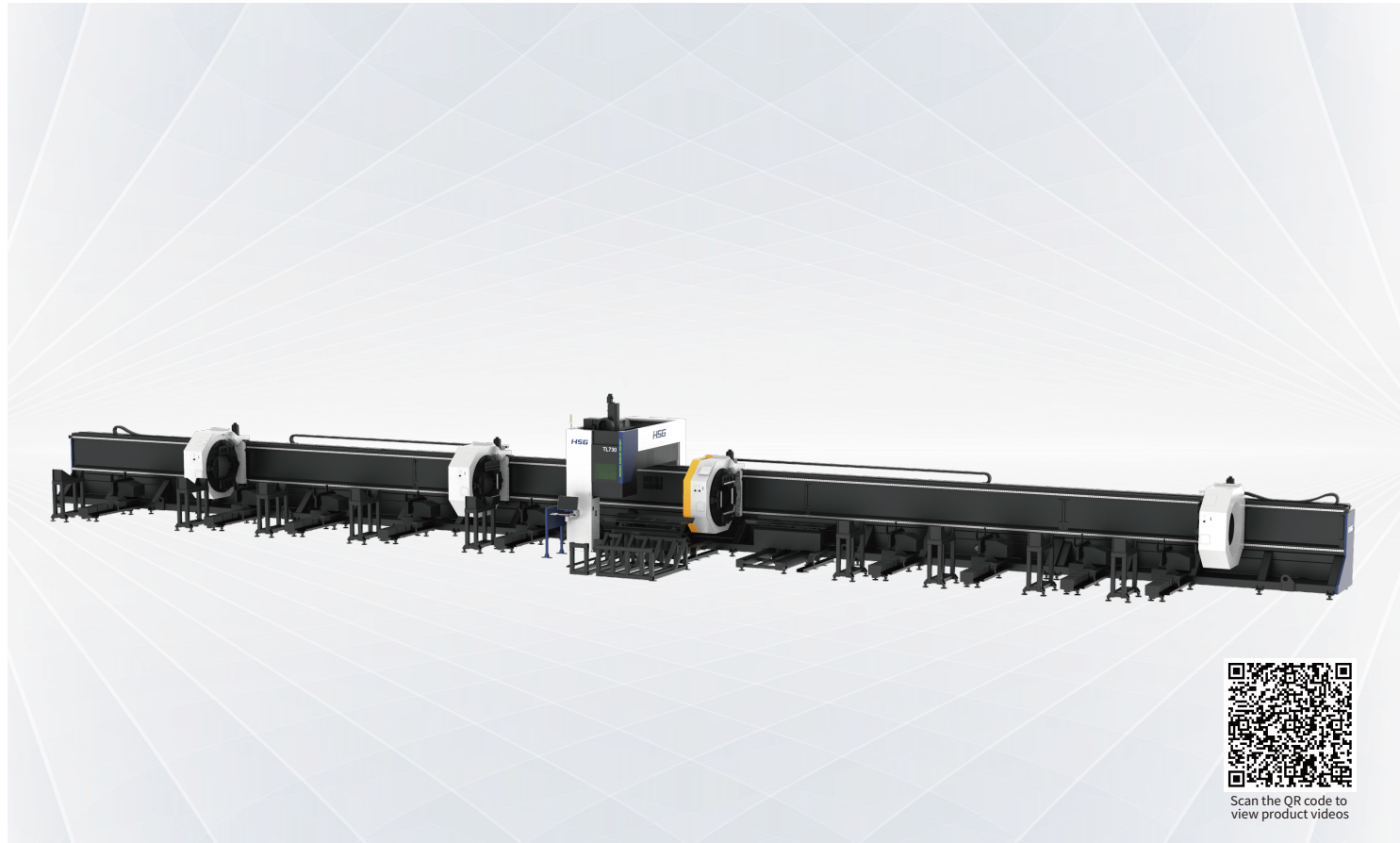
Occupied Area



TL730S

6000-20000W

Flagship ‘4+1’ Full-track Heavy Duty Tube Beveling Fiber Laser Cutting Machine



Technical Parameters

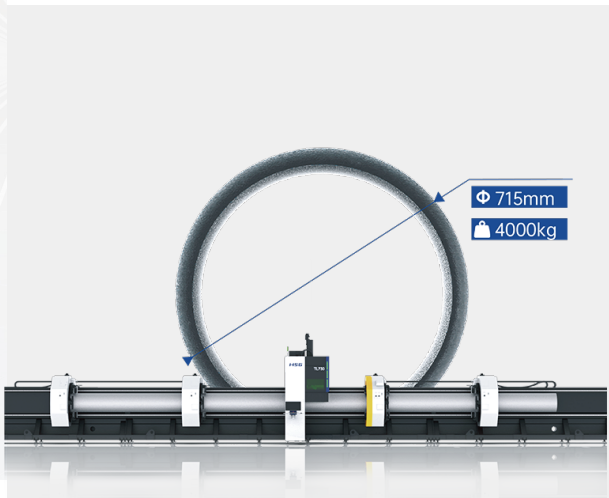
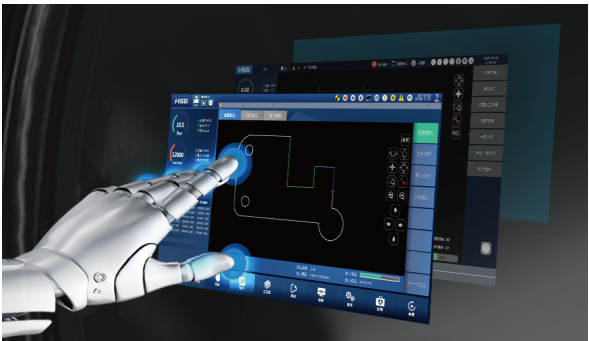
Technical Parameter	TL730S
Power	6000-20000W
Rotating Speed of Chucks	45m/min
X/Y-axis Positioning Accuracy	±0.1mm/m
X/Y-axis Repositioning Accuracy	±0.1mm
*Tailing Length	0
Cutting Capacity	Round tube Φ120 - Φ715 mm Square tube □120-500 mm Rectangular tube ≤715 mm and Side length ≤120-500 mm
Weight of Single Tube	4000kg
Dimensions with Semi-Auto (L*W*H)	38000*6500*5000mm

*Only when the nesting material is reasonable can it be achieved.
* Machine appearance, technical parameters, function description, data comparison shown in this page are from HSG in-house laboratory.
All testing results and experimental data shall be subject to real machine.



HSG-X Bus Control System

- Simple Interface
Clear interface is convenient for users operating and shows cutting data in real time to save time and costs.
- Functional Integration Control
A number of core functions are showed centrally on the interface to reduce operating steps and users can easily learn to operate.



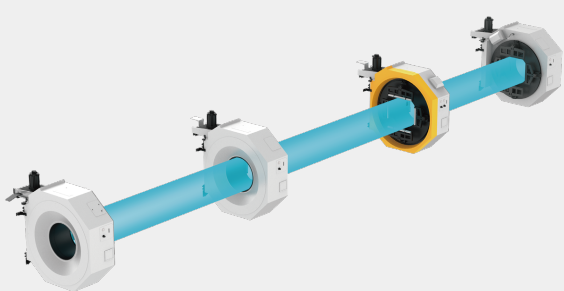
Max Heavy-duty Tube Processing Ability The machine can process tube diameters in 715mm.

- The machine can process tube diameters in 715mm.
- Tube Length: 16m
- Weight per Tube: 4000kg



Innovate 4+1 Chucks Structure

- C3 chuck and C4 chuck are combined to achieve double support.
- There are 4 points clamping at loading section and the load bearing improved significantly.
- Clamping near the cutting area at 2 points which the accuracy is effectively guaranteed.



Intelligent digital chuck

- The chuck and the control system can communicate with each other to achieve full closed-loop control.
*The machine has functions in jaw state detection, tube size measurement and adaptive adjustment of clamping force.



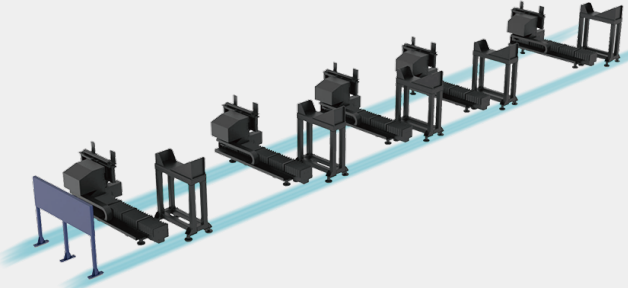
Beveling Processing

- Beveling tube cutting head to achieve 0-45°beveling cutting.



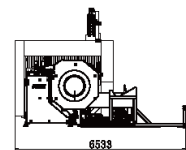
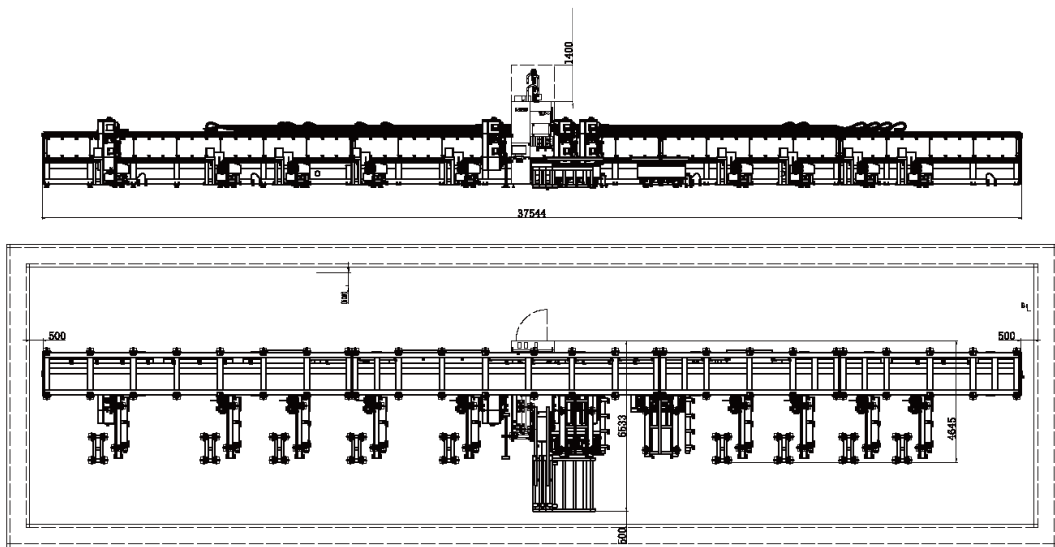
Standard automatic loading and unloading mechanism for heavy tubes

- Realize automatic loading and unloading of heavy tubes, saving labor and reducing the risk of accidents that may occur with manual loading.
- Materials are loaded simultaneously while unloading, eliminating waiting time and improving production efficiency.



Machine Foundation

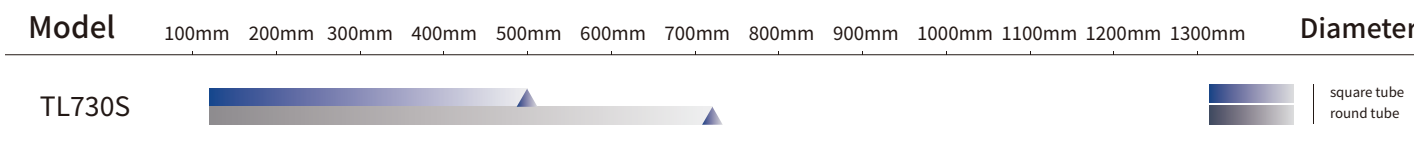
*The marked size has about 10mm error



Cutting Samples



Cutting Capacity



The actual machines shall prevail and above data & pictures are only for reference.